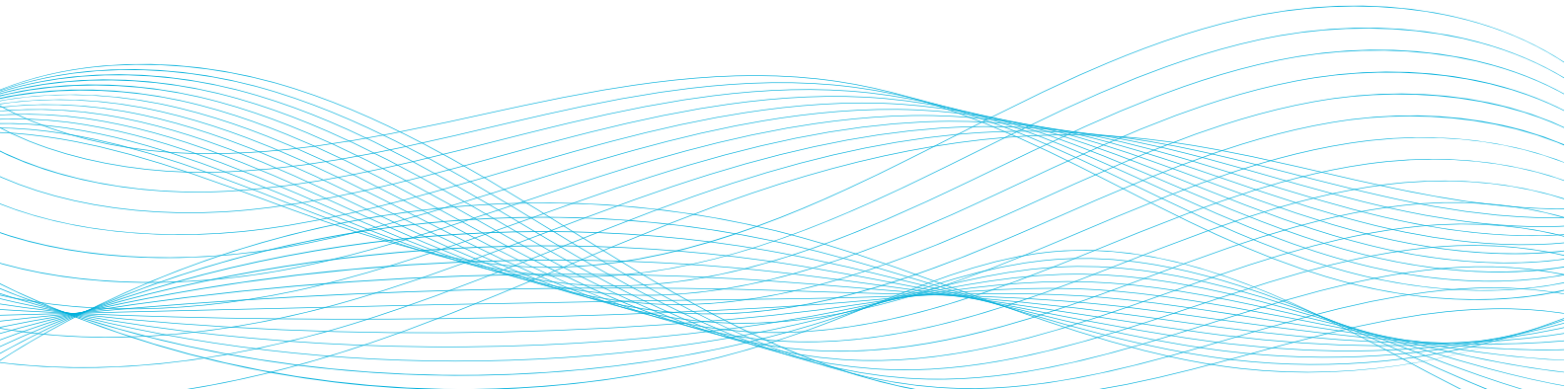


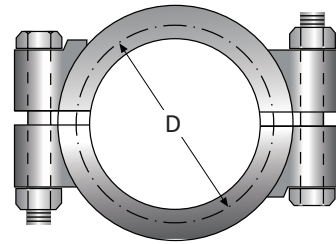
CLAMPS -HANGERS



CLAMPS

High Pressure Tri-Clamp

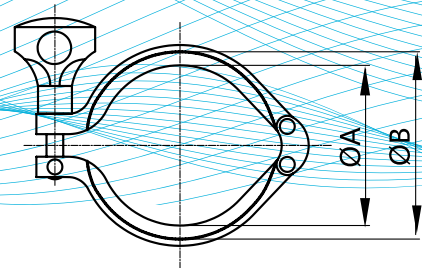
Nominal Size In.	D		Ordering Code
	in.	mm	
1/2" & 3/4"	1.062"	26.97	13-MHP-050/075
1" & 1½"	2.046"	51.97	13-MHP-100/150
2.0"	2.578"	65.48	13-MHP-200
2½"	3.110"	78.99	13-MHP-250
3.0"	3.640"	92.46	13-MHP-300
4.0"	4.744"	120.50	13-MHP-400
6.0"	6.632"	168.45	13-MHP-600



CLAMPS

Tri-Clamp 13 MHHM Heavy Clamp Double Pin

Nominal Size In.	A		B		Ordering Code
	in.	mm	in.	mm	
1.0"-1½"	1.748"	44.4	2.122"	53.6	13-MHHM-100/150
2.0"	2.276"	57.8	2.654"	67.0	13-MHHM-200
2½"	2.811"	71.4	3.185"	80.6	13-MHHM-250
3.0"	3.307"	84.0	3.717"	94.2	13-MHHM-300
3½"	3.898"	99.0	4.299"	109.2	13-MHHM-350
4.0"	4.331"	110.0	4.820"	122.2	13-MHHM-400
4½"	4.843"	123.0	5.244"	133.2	13-MHHM-450
6.0"	6.118"	155.4	6.695"	170.4	13-MHHM-600



Material

304L/Unpolished

316 On request

Ordering Example

Description	Nominal Size In.	Ordering Code
Type 13-MHHM	2.0"	13-MHHM-200

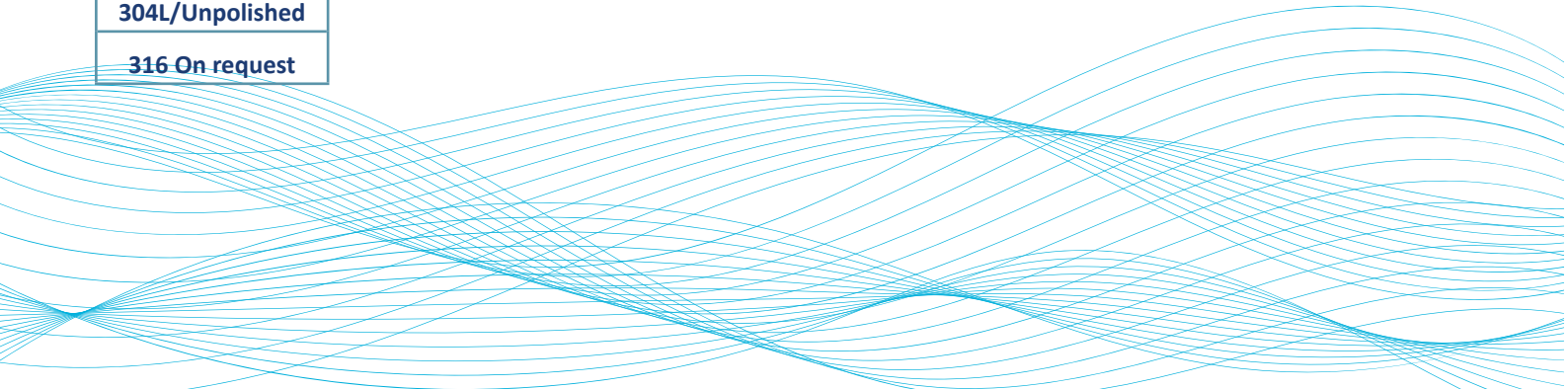


CLAMPS Pressure Control Clamp
US Pattern

Nominal Size In.	D		Ordering Code
	in.	mm	
1½"	2.122"	53.9	FSCL-100/150
2.0"	2.654"	64.5	FSCL-200
2½"	3.185"	80.8	FSCL-250
3.0"	3.717"	94.4	FSCL-300
4.0"	4.820"	108.7	FSCL-400



Material
304L/Unpolished
316 On request

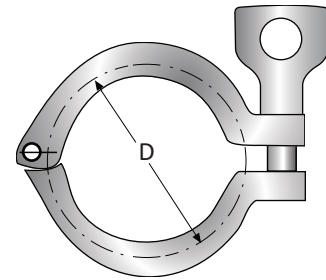


Ordering Example

Description	Nominal Size In.	Ordering Code
Type FSCL	2.0"	FSCL-200

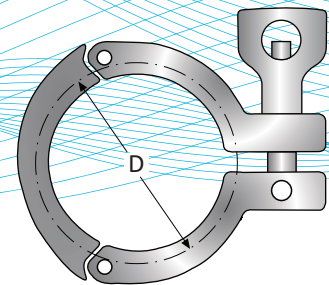
CLAMPS Single Hinge Heavy Duty with Wing Nut

Nominal Size In.	D		Ordering Code
	in.	mm	
1/2" - 3/4"	1.125"	28.5	13-LAH-050/075
1.0" & 1 1/2"	2.122"	53.9	13-LAH-100/150
2.0"	2.654"	64.5	13-LAH-200
2 1/2"	3.185"	80.8	13-LAH-250
3.0"	3.717"	94.4	13-LAH-300
4.0"	4.820"	122.42	13-LAH-400
6.0"	6.695"	170.05	13-LAH-600
8.0"	8.661"	220.0	13-LAH-800
10.0"	10.708"	272.0	13-LAH-1000
12.0"	12.716"	323.0	13-LAH-1200



CLAMPS 3-Segment Heavy Duty with Wing Nut

Nominal Size In.	D		Ordering Code
	in.	mm	
1.0" & 1 1/2"	2.122"	53.9	13-MHHS-100/150
2.0"	2.654"	64.5	13-MHHS-200
2 1/2"	3.185"	80.8	13-MHHS-250
3.0"	3.717"	94.4	13-MHHS-300
4.0"	4.820"	108.7	13-MHHS-400



Material
304L/Unpolished
316 On request

Ordering Example

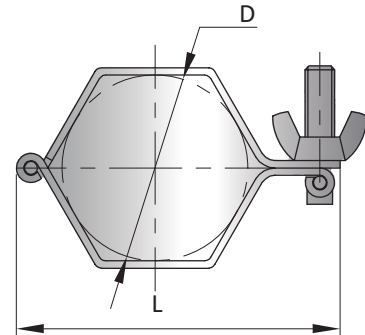
Description	Nominal Size In.	Ordering Code
Type 13-MHHS	2.0"	13-MHHS-200



TUBE HANGERS

Hexagon Pipe Hangers

Nominal Size In.	D	L	Ordering Code
1.0"	25.40	61	025000-903-A* **
1½"	38.10	76	038000-903-A* **
2.0"	50.80	90	051000-903-A* **
2½"	63.50	106	063000-903-A* **
3.0"	76.20	120	076000-903-A* **
4.0"	101.60	146	100000-903-A* **

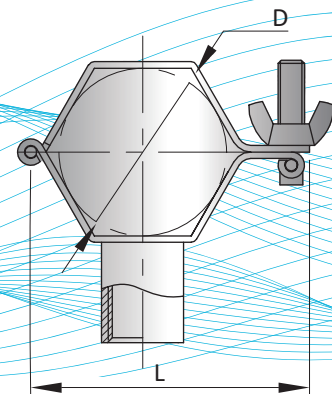


* The first digit refers to material guide, according to Table 1
 ** The last digit refers to surface quality, according to Table 2

TUBE HANGERS

Hexagon Pipe Hangers with Rod

Nominal Size In.	D	L	Ordering Code
1.0"	25.40	61	025000-904-A* **
1½"	38.10	76	038000-904-A* **
2.0"	50.80	90	051000-904-A* **
2½"	63.50	106	063000-904-A* **
3.0"	76.20	120	076000-904-A* **
4.0"	101.60	146	100000-904-A* **



* The first digit refers to material guide, according to Table 1
 ** The last digit refers to surface quality, according to Table 2

Table 1

304 (1.4301)	304L (1.4307)	316L (1.4404)
1	2	5

Table 2

Inside Surface	Outside Surface	Ordering Code
No Finish requirement	No Finish requirement	u
MP* 30µ-in 0.80µm	No Finish requirement	0

*MP: Mechanically Polished

Ordering Example

Description	Nominal Size In.	Ordering Code
Type 903	1.0"	025000-903-A20*

*Material and Surface are including to the ordering code

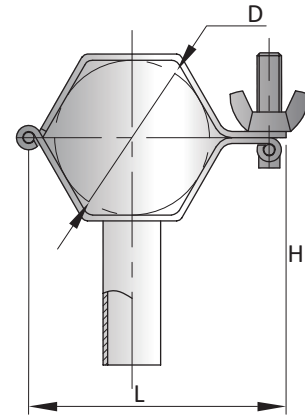


TUBE HANGERS

Hexagon Pipe Hangers with Supporting Tube

Nominal Size In.	D	L	H	Ordering Code
1.0"	25.40	61	100	025000-905-A* **
1½"	38.10	76	100	038000-905-A* **
2.0"	50.80	90	100	051000-905-A* **
2½"	63.50	106	100	063000-905-A* **
3.0"	76.20	120	100	076000-905-A* **
4.0"	101.60	146	104	100000-905-A* **

* The first digit refers to material guide, according to Table 1
 ** The last digit refers to surface quality, according to Table 2



TUBE HANGERS

Hexagon Pipe Hangers with rubber

Nominal Size In.	D	L	Ordering Code
1.0"	25.40	86.6	025000-906-A* **
1½"	38.10	79.0	038000-906-A* **
2.0"	50.80	92.0	051000-906-A* **
2½"	63.50	127.6	063000-906-A* **
3.0"	76.20	142.0	076000-906-A* **
4.0"	101.60	175.0	100000-906-A* **

* The first digit refers to material guide, according to Table 1
 ** The last digit refers to surface quality, according to Table 2

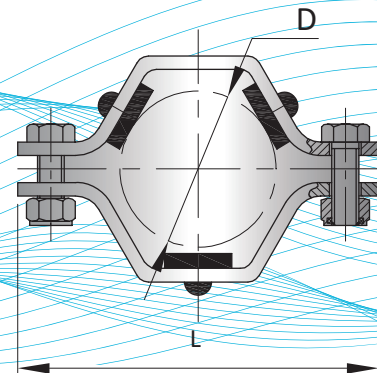


Table 1

304 (1.4301)	304L (1.4307)	316L (1.4404)
1	2	5

Table 2

Inside Surface	Outside Surface	Ordering Code
No Finish requirement	No Finish requirement	u
MP* 30µ-in 0.80µm	No Finish requirement	0

*MP: Mechanically Polished

Ordering Example

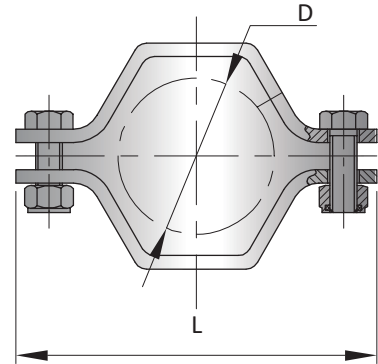
Description	Nominal Size In.	Ordering Code
Type 905	1.0"	025000-905-A20*

*Material and Surface are including to the ordering code



TUBE HANGERS Hexagon Pipe Hangers
PVC Insert

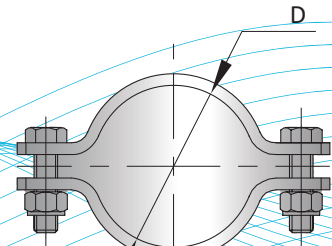
Nominal Size In.	D	L	Ordering Code
1.0"	25.40	86.6	025000-907-A* **
1½"	38.10	79.0	038000-907-A* **
2.0"	50.80	92.0	051000-907-A* **
2½"	63.50	127.6	063000-907-A* **
3.0"	76.20	142.0	076000-907-A* **
4.0"	101.60	175.0	100000-907-A* **



* The first digit refers to material guide, according to Table 1
 ** The last digit refers to surface quality, according to Table 2

TUBE HANGERS Round Pipe Holder

Nominal Size In.	D	Ordering Code
1.0"	25.40	025000-908-A* **
1½"	38.10	038000-908-A* **
2.0"	50.80	051000-908-A* **
2½"	63.50	063000-908-A* **
3.0"	76.20	076000-908-A* **
4.0"	101.60	100000-908-A* **



* The first digit refers to material guide, according to Table 1
 ** The last digit refers to surface quality, according to Table 2

Table 1

304 (1.4301)	304L (1.4307)	316L (1.4404)
1	2	5

Table 2

Inside Surface	Outside Surface	Ordering Code
No Finish requirement	No Finish requirement	u
MP* 30µ-in 0.80µm	No Finish requirement	0

*MP: Mechanically Polished

Ordering Example

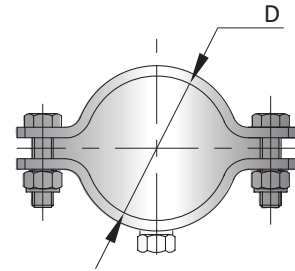
Description	Nominal Size In.	Ordering Code
Type 908	1.0"	025000-908-A20*

*Material and Surface are including to the ordering code



TUBE HANGERS Round Pipe Holder with Nut

Nominal Size In.	D	Ordering Code
1/2"	12.7	015000-909-A* **
3/4"	19.1	020000-909-A* **
1.0"	25.4	025000-909-A* **
1½"	38.1	038000-909-A* **
2.0"	50.8	051000-909-A* **
2½"	63.5	063000-909-A* **
3.0"	76.2	076000-909-A* **
4.0"	101.6	100000-909-A* **
6.0"	154.0	150000-909-A* **
8.0"	204.0	200000-909-A* **
10.0"	254.0	250000-909-A* **
12.0"	304.0	300000-909-A* **



* The first digit refers to material guide, according to Table 1
 ** The last digit refers to surface quality, according to Table 2

Table 1

304 (1.4301)	304L (1.4307)	316L (1.4404)
1	2	5

Table 2

Inside Surface	Outside Surface	Ordering Code
No Finish requirement	No Finish requirement	u
MP* 30µ-in 0.80µm	No Finish requirement	0

*MP: Mechanically Polished

Ordering Example

Description	Nominal Size In.	Ordering Code
Type 909	1.0"	025000-909-A20*

*Material and Surface are including to the ordering code

