



## PIPETITE

Flexible, self-sealing wall boot for pipe penetrations in hygienic environments

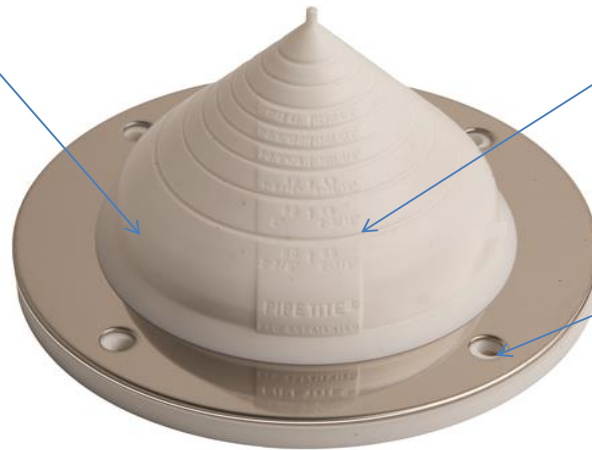


**PIPETITE Standard**

Hygienic, FDA certified silicone rubber, compatible with most cleaning solutions

IP68 Rating

Temperature rated to -50°C to +250°C



Pre moulded cut lines with engraved measurements - easily adapted for most pipe diameters

High quality 316L polished stainless steel with pre drilled holes for fasteners

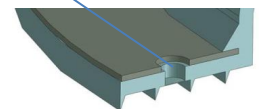
Self-sealing lips eliminate the need for caulks or sealants

Pipetite forms a flexible, durable, sanitary seal, allowing for movement of pipes without breaking the seal



Pipetite Standard is available in 5 sizes, to suit 5-180mm pipe

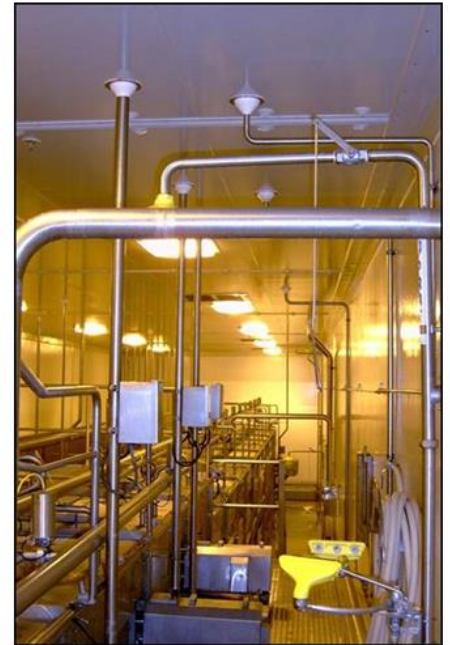
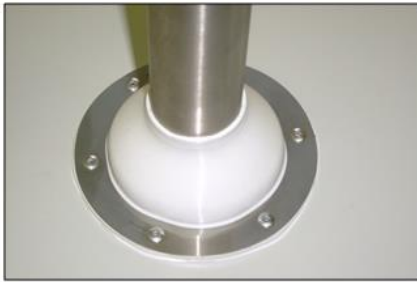
Small diameter holes seal around fasteners



(Cross section)

Pipetite cutters enable easy cutting of Pipetite to required size



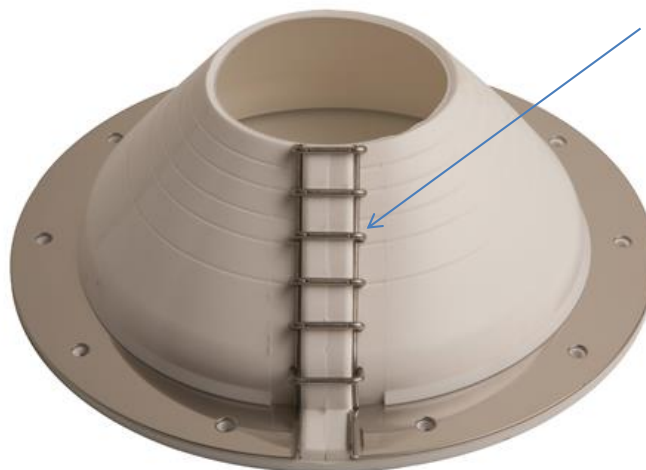


The first Pipetite installation was in the whey processing area of a Fonterra cheese factory in the North Island of New Zealand, in 2006. This is a salty, corrosive environment and the Pipetites are still as good today as when they were installed .

**PIPETITE Reboot**

Specifically designed for easy installation around existing piping

Split design allows ReBoot to be wrapped around existing piping then sealed closed

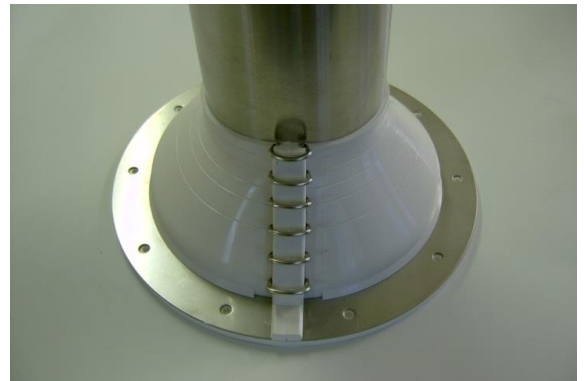


High quality 316L stainless steel ladder for easy installation

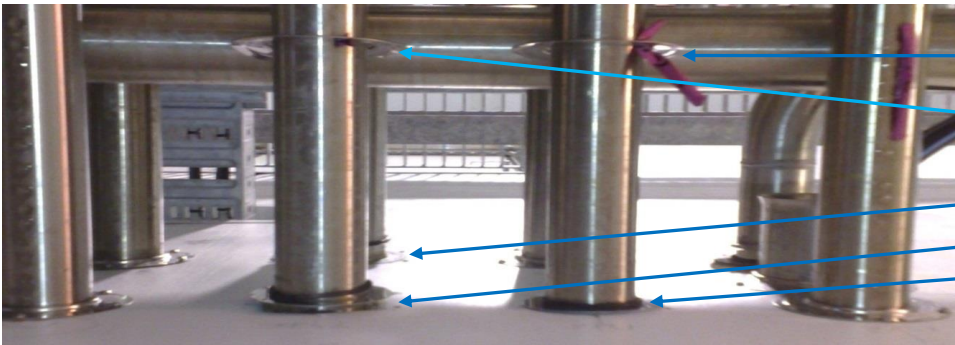
- Available in five sizes:
- 0-65 to 0-95mm (full dome)
  - 70-135 to 165-380mm (pre-cut dome)

Larger sizes can be used as either Pipetite Standard or ReBoot

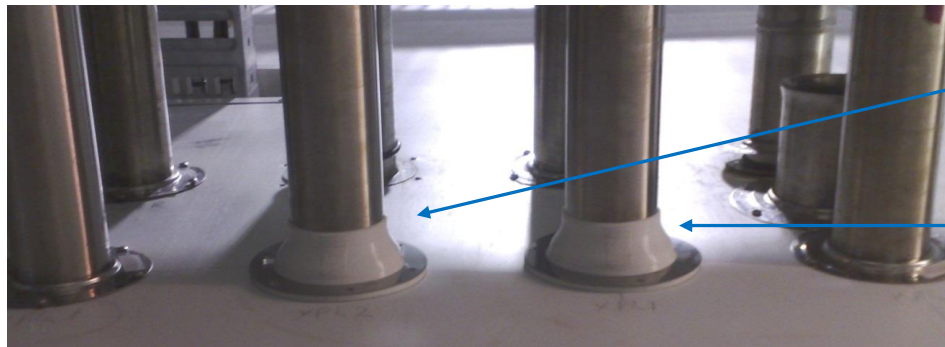
**PIPETITE Reboot Installations**



**Reboot Installations - Before and After**



1 year old installation  
Stainless flanges pulled off wall due to movement



ReBoots installed  
Permanent flexibility  
20 minutes installation time

## Pipe N Pipe

Designed specifically for sealing around pipe-in-pipe installation

Reinforced lip provides excellent sealing



Pre moulded cut lines for accurate cutting

Available in five sizes to fit most commonly used pipes:

25 x 0-25

65 x 0-50

100 x 0-75

150 x 0-135

200 x 0-180

## Installation



### Pipe N Pipe Reboot

Combines the features of the Pipe n Pipe and Pipetite ReBoot

Ideally suited for retrofit installations



Available in 100 x 75mm  
Additional sizes being added

### Pipetite Flat

The ideal solution to hygienically cover existing holes and for jacketed tank installations

Pipetite Flat allows you to fit a Pipetite wall boot where there is insufficient space for a Pipetite Standard



Available in four sizes, from 0-25 to 0-135mm

A multitude of applications

### Pipetite Flat Installations



Hole in panel – Before and After

### Pipetite Grommet

Ideal for creating watertight, reliable seal around wires and tubes as they enter cabinets, panels and enclosures



Flexible lip seal makes installation fast and easy

Available in five sizes, from 0-15mm to 100-180mm

Pipetite Grommet Installation



Pipetite MINI Grommet

NMEA Rated for Type 4,  
Type 4X and Type 6  
enclosures

IP68 Rating

One 16mm hole for all  
sizes, for easy  
installation



Pre-closed prior to  
installation, for hygienic  
installation

Available in four sizes:  
6, 8 10 and 12mm

**Pipetite MINI Grommet Installations**

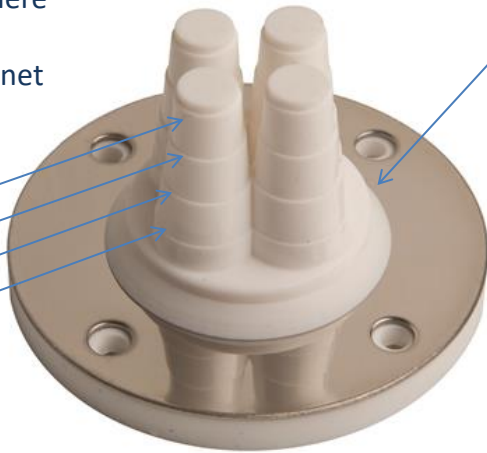


**Pipetite MULTI Grommet**

Ideal for use in situations where there are multiple wires and tubes coming through a cabinet or wall

Multi sizes - fits 4 sizes

- 6mm
- 8mm
- 10mm
- 12mm



Hygienic FDA approved silicone rubber and 316L stainless steel

Provides a hygienic, waterproof, flexible seal

**Pipetite MULTI Grommet Installation**



## Pipetite Double Sided

The multi size (25mm to 180mm), Double Sided Pipetite® is ideally suited to the many industries that use powders. This product prevents powders and liquids on the oor surface entering the room below, creates a seal around the exterior of the pipe, and also seals between a typical supporting oor ange and the oor surface itself. The Double Sided Pipetite® can be permanently attached to the oor using xings if needed.



## Pipetite Double Sided Installation



Before



After

**Pipetite Anchors**

Specifically designed for installing Pipetite Standard, Flat, ReBoot and Multi-Grommets



Two styles available:

← Concrete anchors fasten directly into concrete or brick

Drive-style fasteners with a clean, recess-free surface to prevent dirt and grime



← Two piece anchors for panel walls – specifically designed to apply the correct pressure for an effective seal

100 per jar



Cross section showing two piece anchors installed on panel wall

## CERTIFICATIONS

Pipetite Product	Certification Details
Pipetite Silicone	Declaration of Compliance on Food Contact Materials Conforms to FDA 21 CFR 177.2600 Conforms to Regulation 1935/2004
Pressurised Grommets and Standard Pipetites Pipetite sizes 25mm, 65mm and 95mm Grommet size range 6mm to 12mm	Pressure Leak Test and Grommet Seal Integrity Test
Pipetites 0-25mm and 0-65mm Pipetite Grommet 0-25mm and 0-65mm	IP34 Rating
Pipetite Grommet 0-90mm and 70-135mm	IP64 Rating
Pipetite Mini Grommets - 6mm, 8mm, 10mm and 12mm	IP66/IP68 Rating NMEA Rated for Type 4, Type 4X and Type 6 enclosures
All Pipetite Grade Products	Compliance with BfR Section XV and BfR Section IX
All Pipetite Grade Products	Electrical Property Test - Conductivity - ASTM D 259 and ASTM D 149
Pipetite Outdoor Use	ASTM G 154-06 Exposure to UV light

## APPLICATIONS AND INDUSTRIES

- Blotech
- Pharmaceutical
- Food processing
- Dairy
- Laboratories
- Beverage
- Distilleries
- Fats and oils
- Fish
- Meat
- Poultry
- Pet Food
- HVAC
- Chemicals
- Flour
- Steam
- Hospitals
- Restaurants
- Marine
- Mining
- Pigments
- Oil
- Gas
- Power
- Pulp & paper
- Refinery & petrochemical
- Refrigeration
- Starch & yeast
- Sugar
- Waste watertreatment
- Semiconductor

[www.sealingsystems.gr](http://www.sealingsystems.gr)



SS2025